

TILLAMOOK COUNTY SURVEYORS OFFICE  
COURT HOUSE, TILLAMOOK OREGON 97141

SECTION CORNER COMMON SECTIONS  
19 & 30 T.2S., R.9W., W.M. and 24 & 25 T.2S., R.10W., W.M.

T2S  
R10W R9W  
S24| S19  
---+---  
S25| S30  
1976  
LIC 849

I found a 2" iron pipe with a 3" CrownZellerbach brass cap, (see T.C.S. Map #B-737 and Rewitness Book 6 at Page 6). I encased the found iron pipe in a 10" concrete cylinder.

History of found monument

I found this monument to be as described on T.C.S. Map #B- 737 and in T.C.S. Rewitness Book 6 at page 6 and the references found and/or set at that time to now be as follows:

Original 56" yellow fir N.55°W. 21 lks., reported on above as 56" fir snag; N.55°W. 14' (Found, now a rotten stub 7' tall).

Original 20" hemlock N.52°E. 54 lks., reported on above as mound of hemlock wood; (Now gone).

Original 4" hemlock S.53 1/2°W. 56 lks, reported on above as case hardened hemlock stub S.53°W. 37'; (Now gone position in cat trail).

Original 72" yellow fir S.42°E. 60 lks., reported on above as 72" fir stump S.42°E. 39.7'; (Found, now a 72" stump 7' tall).

(Book 6 Page 6) \*30" fir N.42°E. 18.5' to face; (Found, now a 38" fir stump 3' high at bearing and distance with healed over face).

(Book 6 Page 6) \*24" fir S.31°E. 36.9' to face; (Found, now a 24" fir stump 5' tall at bearing and distance with healed over face, also found yellow metal location poster attached).

(Book 6 Page 6) \*12" fir N.71°W. 17.7' to face; (Found, now a 16" fir stump 3' tall at bearing and distance with healed over face).

(Book 6 Page 6) \*30" fir S.4°W. 24.7' to face; (Found, now a 23" fir stump 5' tall at bearing and distance with healed over face, also found a yellow metal do not cut tag attached, which faces away from the corner towards the road).

New Accessory

\*72" light hat section post North 1.5'.

\*indicates Tillamook County Surveyors yellow metal location poster attached.

Surveys and Rewitnesses of record

B-737	12-10-76	Karl F. Foeste	LS 849
Rewitness Book 6 Page 6	12-10-76	Karl F. Foeste	LS 849
B-922	7-31-80	Robert J. Olsen	LS 701
Field notebook P-16 page 42	1915	C.A. Dunn	
T.C.S. Book "S3" at page 278	9-10-1899 & 10-9 1899		

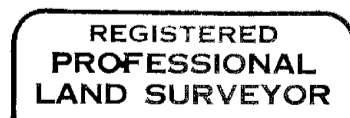
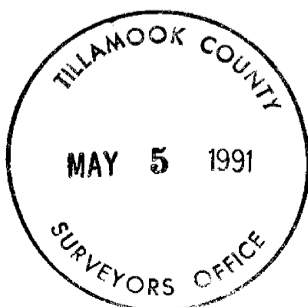
Monument Location

This monument is located approximately 100' NW of a logging road in a small flat area and approximately 80' SW of the toe of a steep slope.

In the presence of Dan McNutt and Al Dvorak

February 27, 1991

Title:



*Allan E. Duncan, C.S.*

